

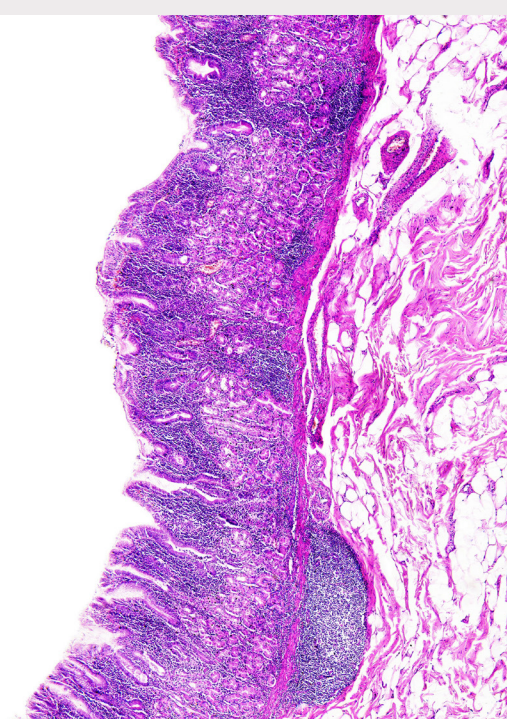
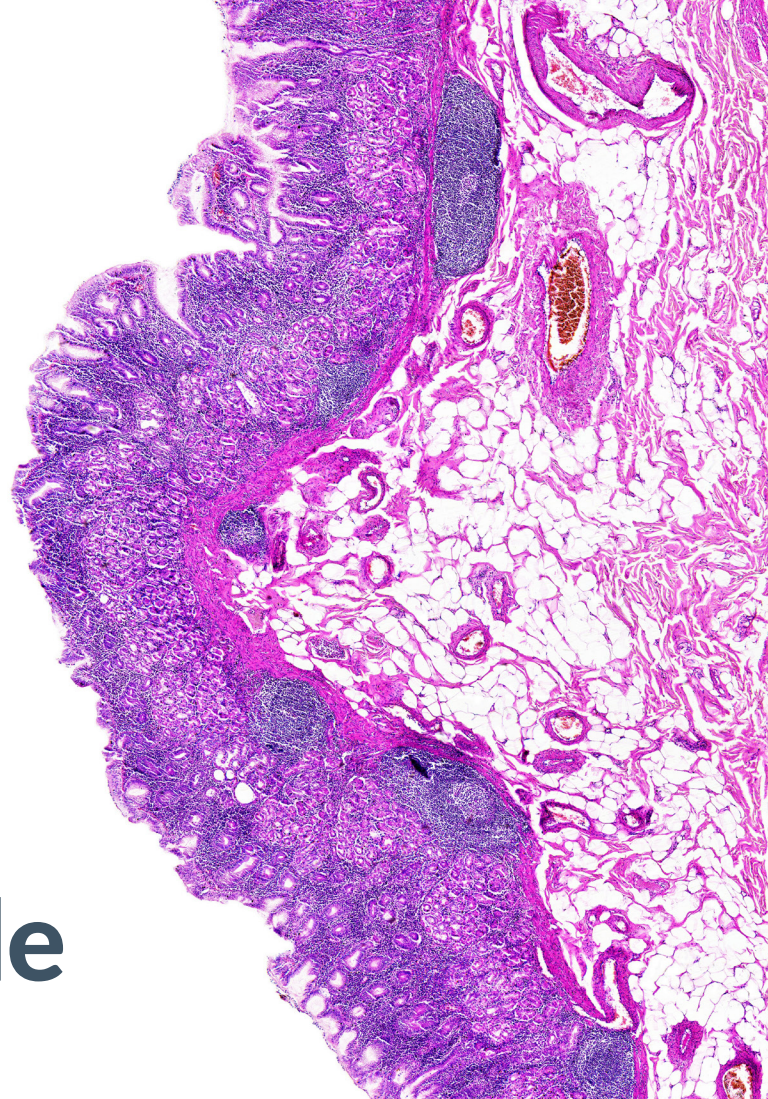


Biomarker Reference Guide

Validated Targets to Support Your Research

From established markers to emerging targets, explore StageBio's extensive library of antibodies designed to deliver reliable, reproducible results across a wide range of therapeutic areas.

For more information, contact: INFO@STAGEBIO.COM



Biomarker List

Alphabetical Indication



If you do not find what you are searching for on this list, StageBio's investigational team will be happy to assist you in developing, validating, and optimizing your antibody. Please reach out to info@stagebio.com or speak to your representative.

BIOMARKER	SPECIES
4F2hc/CD98	Non-Human Primate
5-Lipoxygenase	Human
Actin, alpha Smooth Muscle	Pig
Actin, smooth muscle	Human, Canine, Feline, Swine, Mouse, Rat
ADK, adenosin kinase	Rat
Alpha 2 globulin	Rat
Alpha Tubulin	Human
Alpha-Smooth Muscle Actin (SMA)	Mouse, Rat
Asporin, ASPN	Human
ATP Synthase C (SCMAS)	Rat
B7-H3; CD276	Human
Bcl-6, Bcl-6 transcription repressor	Human
BD2, beta-2 defensin	Human
Beta 3 Tubulin	Rat
Beta Amyloid (4G8)	Human
Beta Catenin	Mouse, Human
beta-Amyloid	Mouse, Human
BRCA1	Human
BRDU	NA
BRN3A	Mouse, Rat
Bub3	Human
C1q complement	Human
C3c complement	Human
CA-125; Mucin 16	Human (HeLa)
CA4	Human
Calbindin	Mouse, Rat, Non-Human Primate
Calcitonin	Canine, Feline
CAM5.2	Canine, Feline
Capase-3	Human, Mouse, Swine
Cardiac Troponin T	Swine
Caspase-3	Minipig, Rat
Cathepsin K	Rat
CatS	Human, Mouse
CAV1	Human
CB2/CNR2	Human
cCas3	Human
CD10/Neprilysin	Rat

Biomarker List

Alphabetical Indication



BIOMARKER	SPECIES
CD105	Human
CD107a / LAMP1	Mouse
CD11b	Mouse
CD138	Human, Non-Human Primate, Canine, Feline
CD138 /syndecan-1	Human
CD163	Swine, Mouse, Rat, Non-Human Primate
CD18 Fe	Feline
CD18k9	Canine
CD20	Non-Human Primate, Human, Mouse, Canine, Feline
CD204	Canine, Feline
CD206, MRC1	Human
CD21	Human
CD25	Mouse
CD25; IL2R	Human, Human (Cell Line)
CD3	Mouse, Human, Non-Human Primate
CD31	Human, Mouse, Rat, Canine, Feline, Swine, Sheep
CD31; PECAM-1	Mouse, Guinea Pig, Human, Rabbit
CD34	Canine, Feline, Mouse, Rat, Human, Swine
CD3-LN10	Canine, Feline, Non-Human Primate, Swine
CD4	Non-Human Primate, Human, Mouse, Rat
CD40	Human
CD40L/CD154	Human
CD45	Mouse, Canine, Human
CD45R/B220	Mouse
CD45RB	Human
CD54	Human
CD54/ICAM	Human
CD56	Canine, Feline, Non-Human Primate, Mouse
CD56/NCAM1	Human, Canine
CD66B/CEACAM8	Human
CD68	Human, Mouse, Non-Human Primate, Swine, Rat
CD79a	Canine
CD8	Mouse, Human, Non-Human Primate
CD8 Alpha	Mouse
CD80	Human
CD86	Mouse
CD8a	Mouse
CD98	Mouse, Non-Human Primate
CD98; 4F2hc/SLC3A2	Canine, Mouse (NEG), Human

Biomarker List

Alphabetical Indication



BIOMARKER	SPECIES
CGRP	Human
CHOP, DDIT3	Human
Chromogranin A	Canine, Feline
CK AE1/AE3	Canine, Feline, Swine
cKIT (CD117)	Feline, Canine
Cleaved Caspase-3	Human, Mouse, Rat
cMAF	Rat, Swine
CNTN1	Human
COL1A1	Human
Collagen I	Rabbit
Collagen I-A1	Rat, Swine, Human
Collagen III	Rat, Swine, Human
Collagen IV	Human
Complement 3 (C3)	Human, Non-Human Primate
Complement Factor H	Non-Human Primate, Human, Rabbit
Complement Factor I (CFI)	Non-Human Primate, Human, Rabbit
Corin	Rat
CREST	Mouse, Canine
CRISPR-Cas9	Specie Independent (Transgenic, Cell Pellets)
CTLA4/CD125	Human, Human (Cell Line), Hamster
CX43	Human, Rat
Cytokeratin 10	Pig
Cytokeratin 14 (CK14)	Rabbit
Cytokeratin 17	Pig
Cytokeratin 20 (CK20)	Canine
Cytokeratin 7 (CK7)	Canine
Cytokeratin 8 (CK8)	Canine
Cytokeratin MNF-116	Canine, Feline
Cytokeratin, high molecular weight	Human
Desmin	Canine, Feline, Human
DLL3	Human
DOG-1	Canine
Dopa decarboxylase	Mouse
DSG2	Human
DUPLEX: alpha Smooth Muscle Actin/FITC + Cytokeratin 17/PE	Pig
DUPLEX: CD40 + TPR	Human
DUPLEX: Ki-67 & cCas3	Mouse
DUPLEX: NrCAM + NCAM1	Human (Cancer Cell Lines)
DUPLEX: Rhodopsin/FITC + GFAP	Rabbit

Biomarker List

Alphabetical Indication



BIOMARKER	SPECIES
DUPLEX: TNFRSF1A + TNFRSF1B	Human
EB1	Human, Human (Xenografts)
E-Cadherin	Canine, Feline, Mouse
EGFR	Human
eIF4E	Human, Human (PDX)
Elastin	Swine
F11R	Human
F4/80	Mouse, Rat
Factor 8	Canine, Feline
FAM234B	Human
FAP	Human, Canine
Fas Receptor (CD95)	Human
Feline Corona Virus (FIP)	Virus
Fibronectin	Human, Rat
FITC	Specie Independent
FKBP9	Human
Foxp3	Human, Mouse
FoxP3	Mouse
FUBP1	Human
Galactosidase alpha	Human, Mouse
GALC	Mouse
Galectin-3	Rat
GAP43	Swine
GFAP	Mouse, Rat, Swine, Sheep, Non-Human Primate, Rabbit, Canine, Feline
GFP	Specie Independent (Transgenic), Mouse
GOLGA2	Human
GOLGB1	Human
GOLIM4	Human
GPRIN1	Human
Granzyme B	Human, Mouse, Canine, Feline
HAM56	Sheep
HBsAG	Mouse
HA-TAG	NA
HBEGF/DTR	Human, Mouse
HMB45	Human
HSP47	Mouse
Human Alu Sequence (via ISH)	Human
Human IgG	Human (in Mouse, Rat)
Human Mitochondria	Human (in Mouse)

Biomarker List

Alphabetical Indication



BIOMARKER	SPECIES
Human Nuclear Antigen	Human (in Mouse, Rat)
Iba1	Mouse, Rat, Canine, Minipig, Rabbit, Mouse
TIM-1	Rat, Mouse
IL1b	Rabbit
Isolectin B4	Swine
ITGA5	Swine
iNOS	Rat, Sheep
IL6	Mouse
Insulin	Rat, Mouse, Swine, Human
mCherry (via anti- red fluorescent protein)	NA
MafA	Rat
Ku80	Human (in Rat, Swine)
Laminin	Mouse
LYVE-1	Swine
Luciferase	NA
LY6G	Mouse
IgA	Human
IgM	Human
IL-1 beta	Human
IL-17	Human
IL-18	Human
Insulin	Mouse
Kappa Light Chain	Human
Keratin 5	Human
KHSRP	Human
Ki67	Canine, Feline
Ki-67	Human, Mouse, Rat
Lambda Light Chain	Human
LOX	Human
LOXL1	Human
LOXL2	Human
LRP8	Human
LTBR_L36	Human, Canine
LTBR_L37	Human, Canine
Ly6c	Human, Mouse
Lyve	Human, Mouse
Mad2L1	Human (Xenografts & PDX)
MBP	Mouse
MBP (myelin basic protein)	Mouse

Biomarker List

Alphabetical Indication



BIOMARKER	SPECIES
MDR1	Human (Cell Line)
Melan A/Mart-1	Canine, Feline
Melanoma - PNL2	Canine, Feline
MET	Human (Tissue)
MHI Class I (H-2Kd/H-2Dd)	Human, Mouse
Mitochondria	Human, Mouse
MMP9	Human, Mouse
MPO	Human, Canine, Mouse, Rat
MPO (myeloperoxidase)	Canine
mScarlet (via anti-red fluorescent protein)	NA
MUM1	Canine, Feline
MyDGF	Human, (in Rat)
Myelin basic protein	Rat
MYH11	Swine
MYL1 (MY32)	Swine
MyoD1	Canine
Myogenin	Canine
Myosin 3	Mouse
Myosin 9	Human (Cell Lines), Human (PDX)
Myosin; fast	Mouse, Rat
Myosin; slow	Mouse
NeuN	Mouse, Rat, Sheep, Swine
Neurofilament-Heavy Chain	Rat
Neuropeptide Y	Human, Non-Human Primate, Mouse, Rat, Canine
Neutrophil elastase	Non-Human Primate
NFkB	Human
NGAL	Rat
NKG2D/CD314	Human
Non-Human Primate IgG	Non-Human Primate
NRCAM	Human
NrCAM	Human
OCIAD1	Human
OIF, OGN, osteoglycon, mimecan	Human
Olig2	Human, Non-Human Primate, Rat, Mouse, Swine
Osterix	Canine
p16	Human
p21	Rat
p63	Rabbit, Canine, Feline
PAR1	Human

Biomarker List

Alphabetical Indication



BIOMARKER	SPECIES
PAX5	Canine, Feline
PCNA	Rat
PDGFR	Human
PD-L1	Human
PEG	NA
Perforin	Human
Peripheral Node Addressin	Human, Non-Human Primate
pERK	Human
pERK, MAPK1	Human
PGP9.5	Swine, Rat, Canine
p-histone H3	Human, Mouse
Plectin	Human (Cell Lines)
PMEL17	Human, Swine
Pro Surfactant C	Human
Progranulin (PGRN)	Non-Human Primate
pS6	Human (Cell Pellets & PDX)
pSHP2	Human (PDX)
PSMA	Human
pSMAD2	Rat
pSrc	Human (Cell Pellets & PDX)
pSTAT6	Human
PTH	Canine
PTK7/CCK4	Human
RAI14	Human
RAM11	Rabbit
Red/Green Cone Opsin	Human, Swine, Rat, Non-Human Primate
RFP (tdTomato)	Species Independent
Rhodopsin	Human, Swine, Rat, Non-Human Primate, Rabbit
RIPK1	Human
RPE65	Rat
RUNX2	Canine
S100	Mouse, Rat, Canine, Feline
SATB2	Canine, Feline
SCGN	Human
SM22alpha	Swine
SOX10	Human, Canine, Feline
SPINT1	Human
SPINT1/HAI-1	Human
ST14	Human

Biomarker List

Alphabetical Indication



BIOMARKER	SPECIES
STEM 121	Human
STEM 123	Human
STX7	Human
Substance P	Human
Synaptophysin	Swine, Mouse, Rat, Human, Canine, Feline
Tau S396	Human
Tau46	Human
THBS3	Human
Thrombin	Human
Thyroglobulin	Canine, Feline
TNF alpha	Human
TNFa	Human
TNFAIP6	Human
TNFRSF1A	Human
TNFRSF1B	Human
TOM70	Human
TPR	Human
TROP2	Human
TRPC4	Human
Tryptase	Human, Canine, Feline, Mouse
TTF-1	Canine, Feline
Turbo GFP	NA
Tyrosine Hydroxylase	Swine, Canine, Mouse, Rat
VEGF-C	Swine, Human
VEGF	Swine, Human
UGT1A1	Rat
Uroplakin II + Uroplakin III	Canine, Feline
VGLUT2	Rat
Vimentin	Human, Canine, Feline
Vimentin (V9)	Human
Vitronectin (VTN)	Human
Von Willebrand Factor (VWF)	Human, Non-Human Primate
WTAP	Human